

Lines of authority and accountability in The Christian and Missionary Alliance

Based on the Local Church Constitution and other policies in
The Manual
of The Christian and Missionary Alliance in Canada

Authority and Accountability

What does authority entail?

- Responsibility – *“I face daily the pressure of my concern for all the churches.”* (2 Corinthians 11:28)
- Nurture – *“strengthening the churches.”* (Acts 15:41)
- Making decisions – *“This is the rule I lay down in all the churches.”* (1 Corinthians 7:17)
- Executing decisions – *“What is more, he was chosen by the churches to accompany us.”* (2 Corinthians 8:19)

How does accountability assist?

- Profiting from others’ experience – *“Now these things occurred as examples...”* (1 Corinthians 10:6)
- Alignment with those on the same path – *“striving together as one for the faith of the gospel”* (Philippians 1:27)
- Protection from unwise, isolated decisions – *“we have no other practice—nor do the churches of God.”* (1 Corinthians 11:16b)

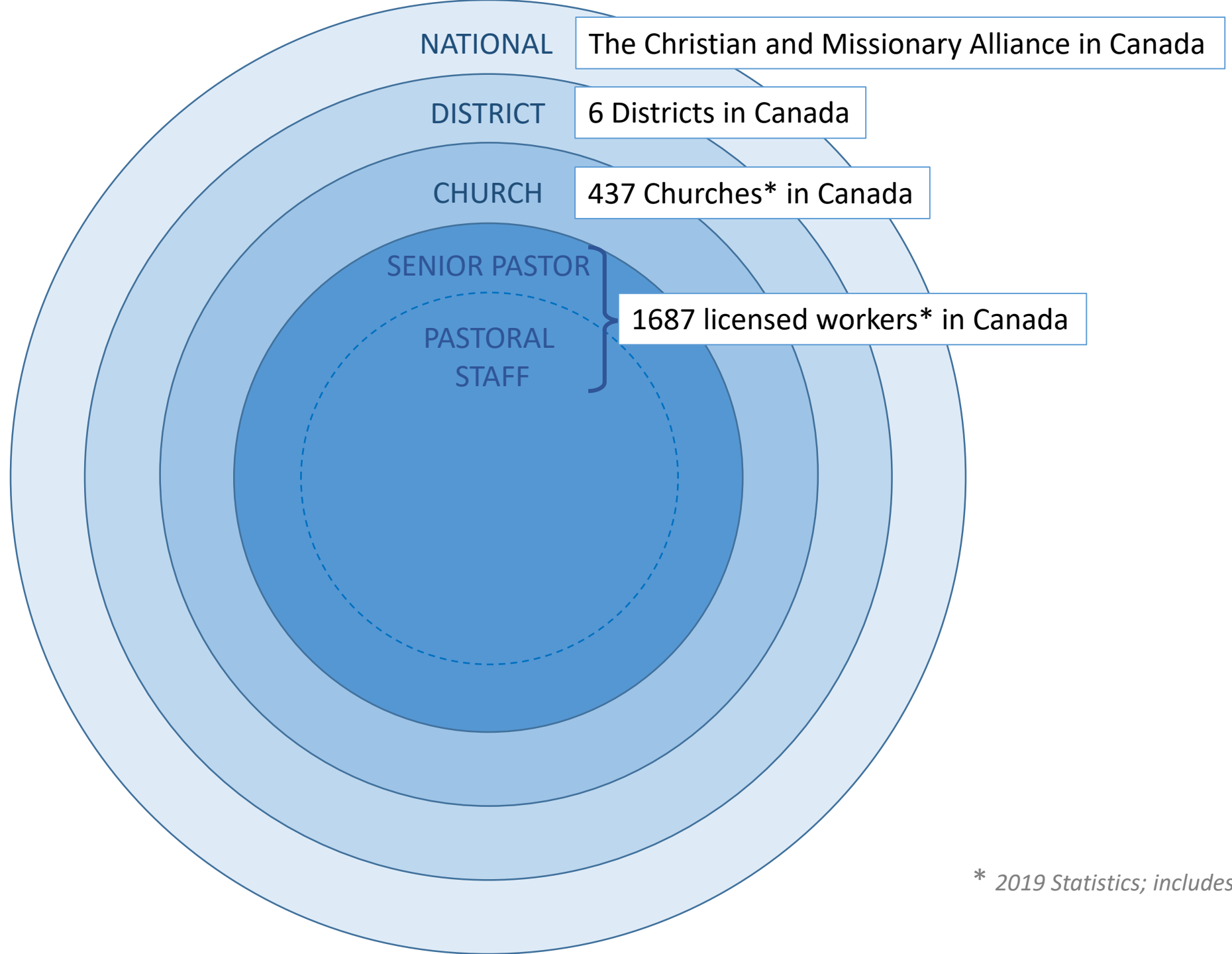
Authority and Accountability

Authority depends on being accountable

“[Your leaders] keep watch over you as those who must give an account.”
(Hebrews 13:7)

Accountability grants authority

“Follow my example, as I follow the example of Christ.” (1 Corinthians 11:1)
“For you yourselves know how you ought to follow our example.”
(2 Thessalonians 3:7)



* 2019 Statistics; includes IWs

NATIONAL



The Christian and Missionary
Alliance in Canada

NATIONAL

The Christian and Missionary Alliance

- Local Churches joined together for...
 - the declaration of the Fourfold Gospel of Jesus Christ
 - strategic regional influence
 - recognized national presence
 - proclaiming Jesus where few or none have heard
- ...who have organized themselves to...
 - create an environment in which churches can thrive
 - propel themselves into global ministry
 - ensure quality personnel availability and supervision
 - optimize governance and operational practices
- ...and registered as a Not-for-profit corporation to...
 - preserve the right to carry out the mission of the C&MA
 - enjoy and discharge collective privileges and obligations

NATIONAL

DISTRICT



NATIONAL

DISTRICT

The District of the C&MA

- C&MA churches and workers joined to...
 - nurture the health of C&MA Churches
 - provide qualified ministry staff to churches
 - leverage property value for mission purposes
- ...and oversee ministry personnel by...
 - approving candidates for ministry
 - appointing/licensing pastoral staff members
 - stimulating worker vitality
 - issuing annual worker licenses
- ...and guide ministry extension through...
 - multiplication of existing churches
 - initiation of out-of-scope ministries



NATIONAL

DISTRICT

CHURCH

Church of the C&MA

A group of believers which has joined the C&MA by adopting the Local Church Constitution or equivalent (incorporation) *or* The Constitution for Developing Churches

Holding with other C&MA churches...

- an agreed upon purpose (LCC Article 2)
- a shared set of beliefs (LCC Article 3)
- common policies/regulations (LCC Article 4)
- key operational structures (Manual)

**...to create synergy and maximize
Kingdom impact**

Parallel structures in the C&MA

<i>National</i>
<i>Description</i> Denomination
<i>Legislative body</i> General Assembly
<i>Governing body</i> Board of Directors
<i>Point leader</i> President (Accountable to Board of Directors)

Parallel structures in the C&MA

<i>National</i>	<i>Regional</i>
<i>Description</i> Denomination	District
<i>Legislative body</i> General Assembly	District Conference
<i>Governing body</i> Board of Directors	District Executive Committee (DEXCOM)
<i>Point leader</i> President (Accountable to Board of Directors)	Superintendent (Accountable to DEXCOM and President)

Parallel structures in the C&MA

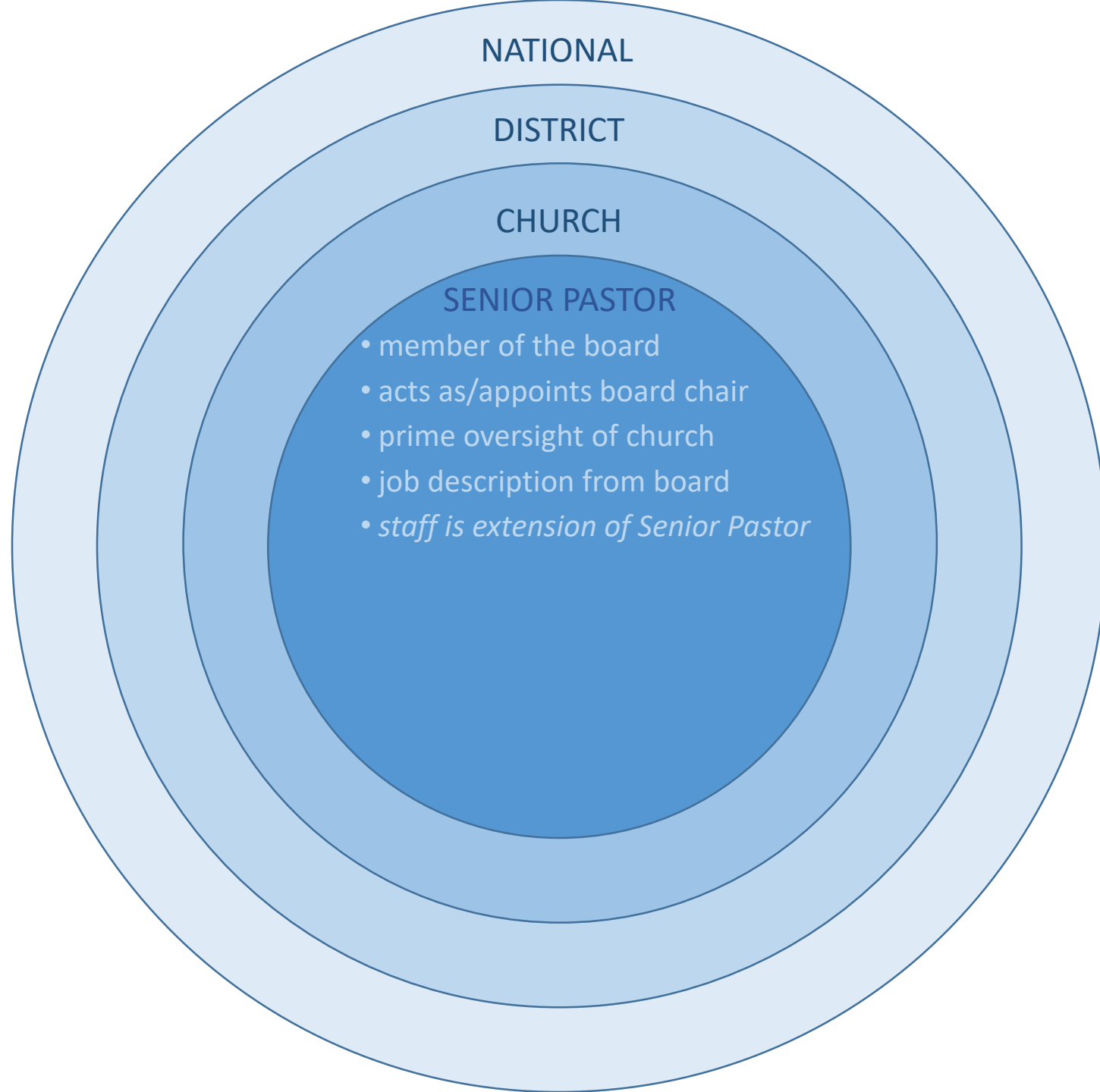
<i>National</i>	<i>Regional</i>	<i>Local</i>
<i>Description</i> Denomination	District	Church
<i>Legislative body</i> General Assembly	District Conference	Annual Meeting
<i>Governing body</i> Board of Directors	District Executive Committee (DEXCOM)	Board of Elders
<i>Point leader</i> President (Accountable to Board of Directors)	Superintendent (Accountable to DEXCOM and President)	Pastor (Accountable to Board of Elders and Superintendent)

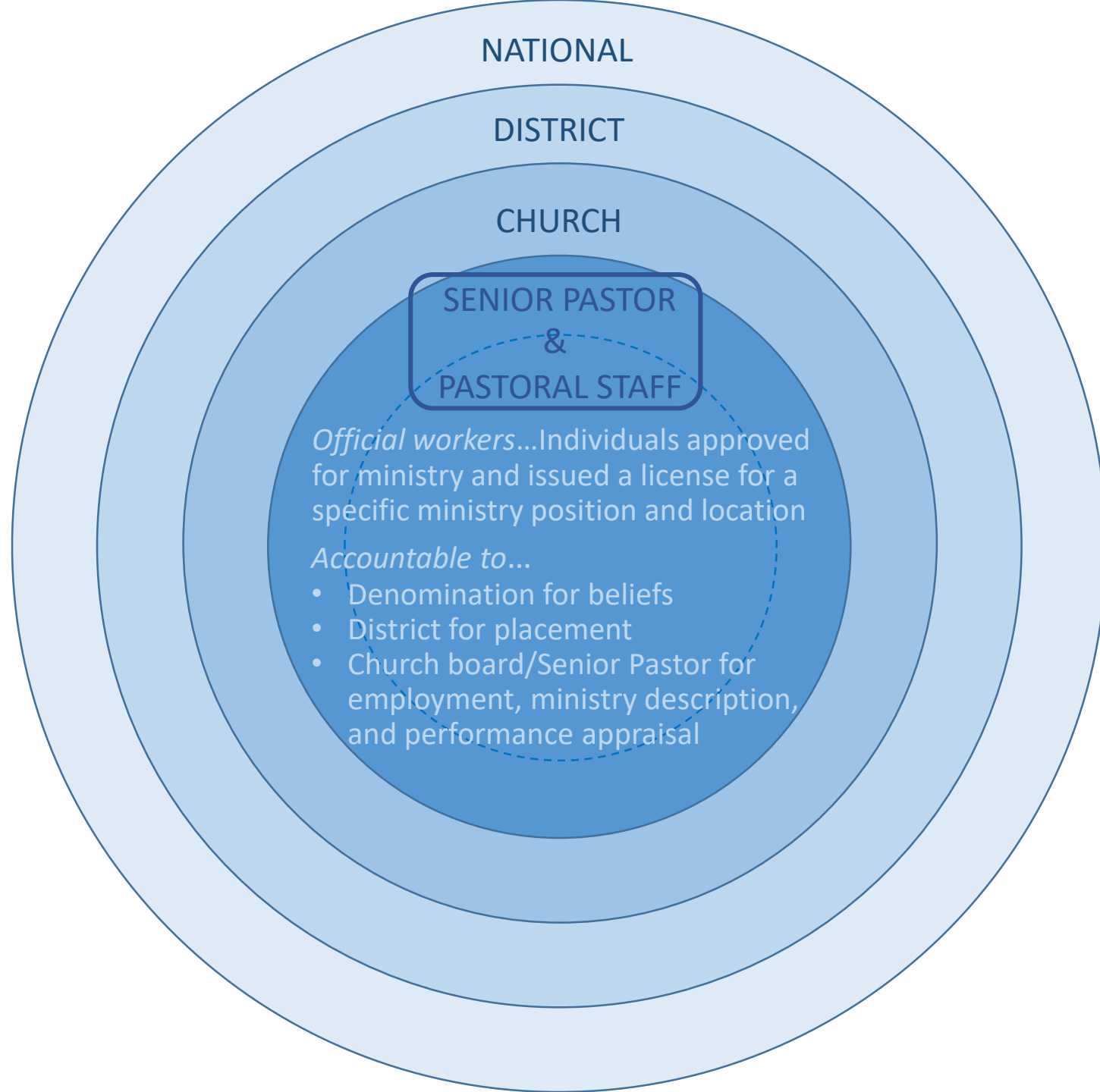
***“The local church enters into relationships
with other like-minded churches for
accountability, encouragement and mission.”***

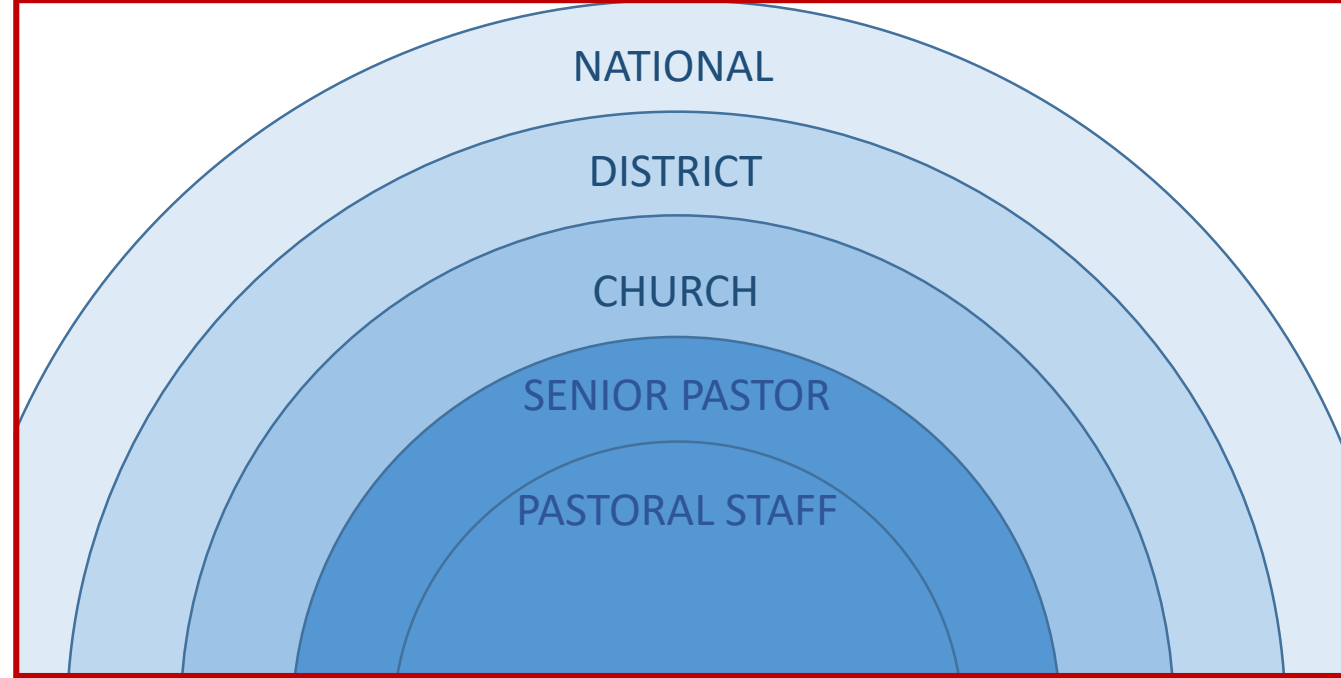
Excerpt from Statement of Faith Article 9
The Christian and Missionary Alliance

“Each Christian and Missionary Alliance church is an integral part of the national and worldwide fellowship, and it is united in governance, fellowship, and service in order to promote unity of faith in the fullness of Jesus Christ as Saviour, Sanctifier, Healer, and Coming King, thereby facilitating the spread of the Gospel at home and abroad under the guidance of the Holy Spirit.”

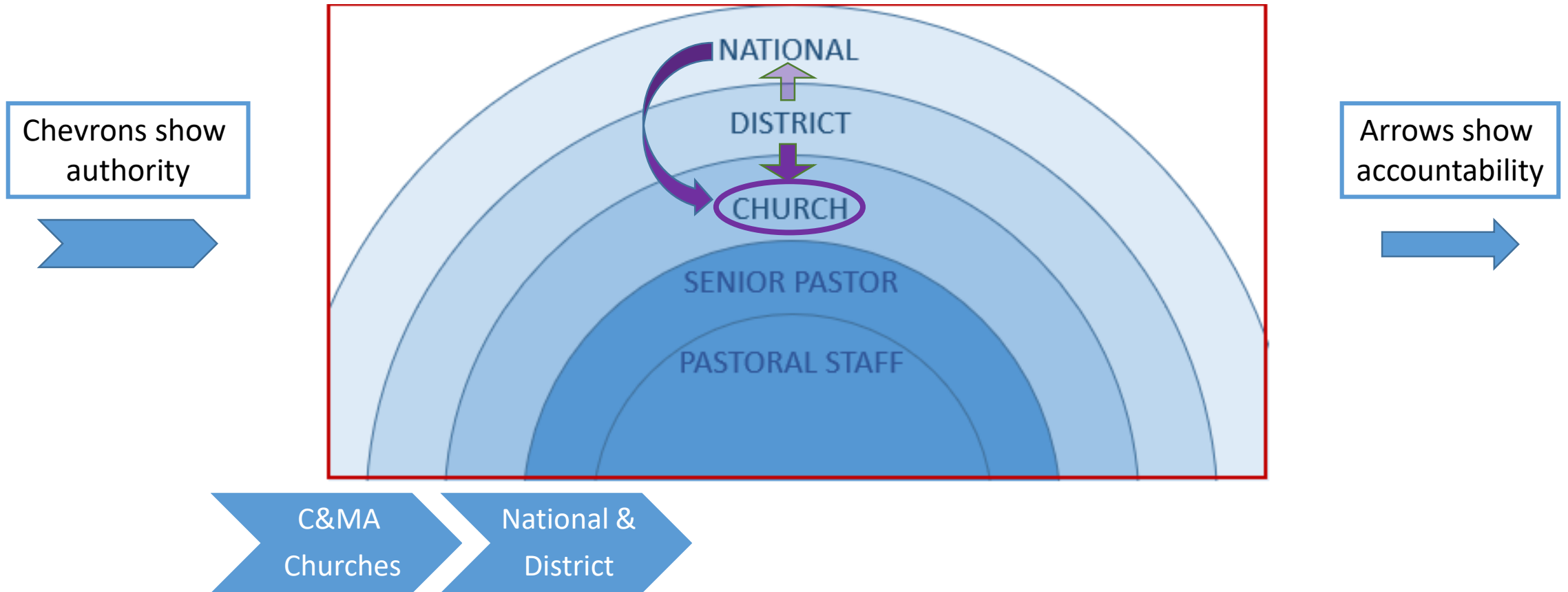
Preamble to Local Church Constitution and Constitution for Developing Churches
Similar wording in the Preamble to the Policy on District Organization





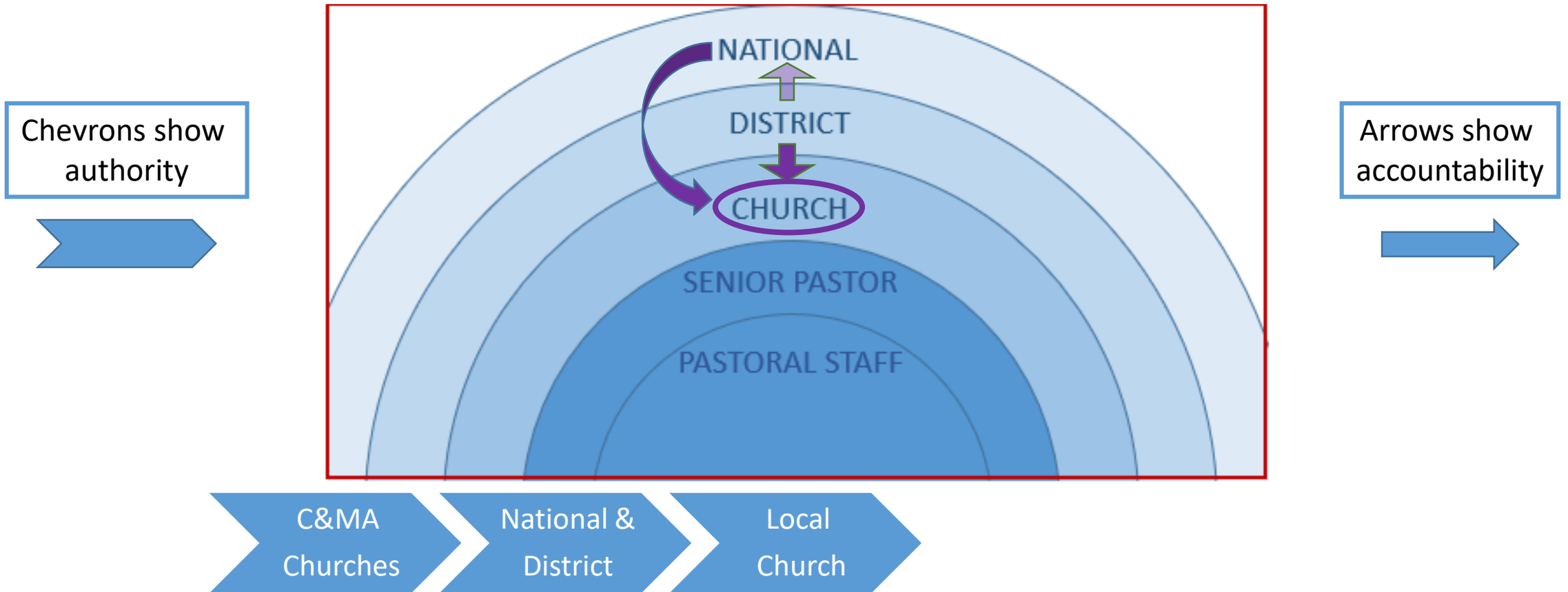


Where the Local C&MA Church fits



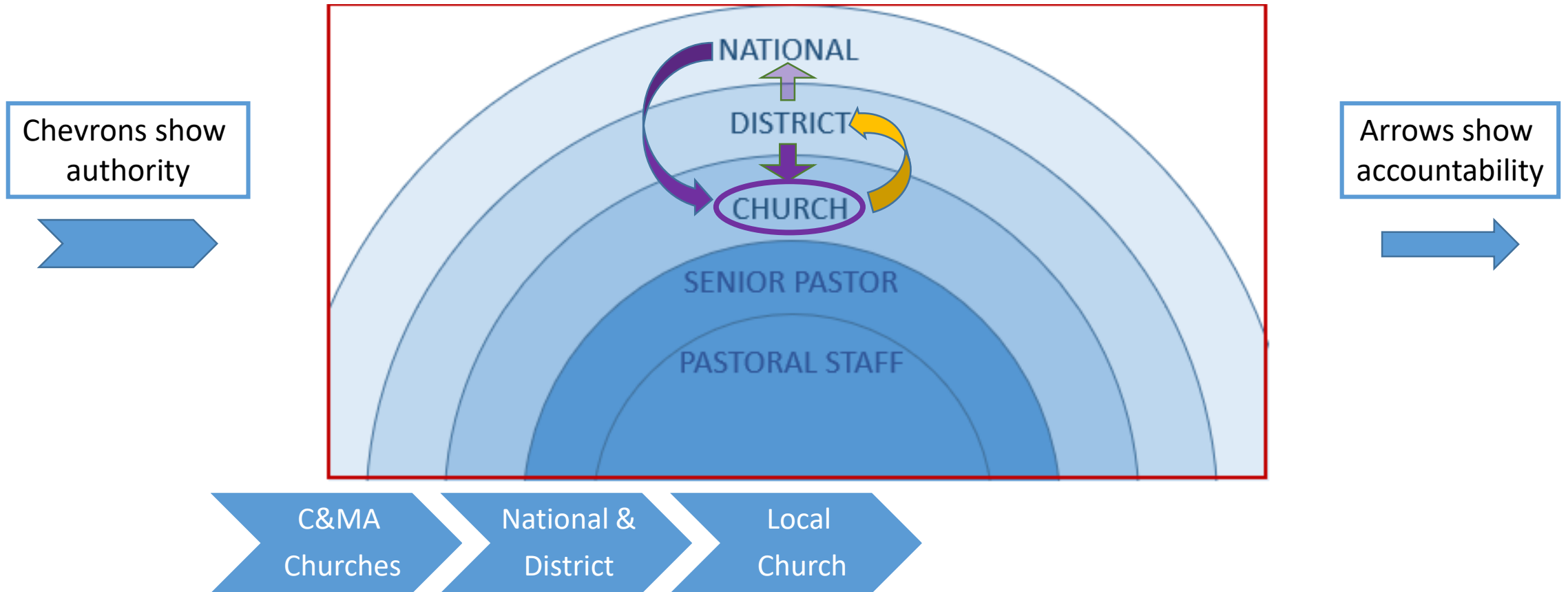
C&MA churches collectively oversee the (national) Denomination and the District. The Denomination and District are accountable to C&MA churches (the members). The District is also accountable to the Denomination through the President.

Where the Local C&MA Church fits



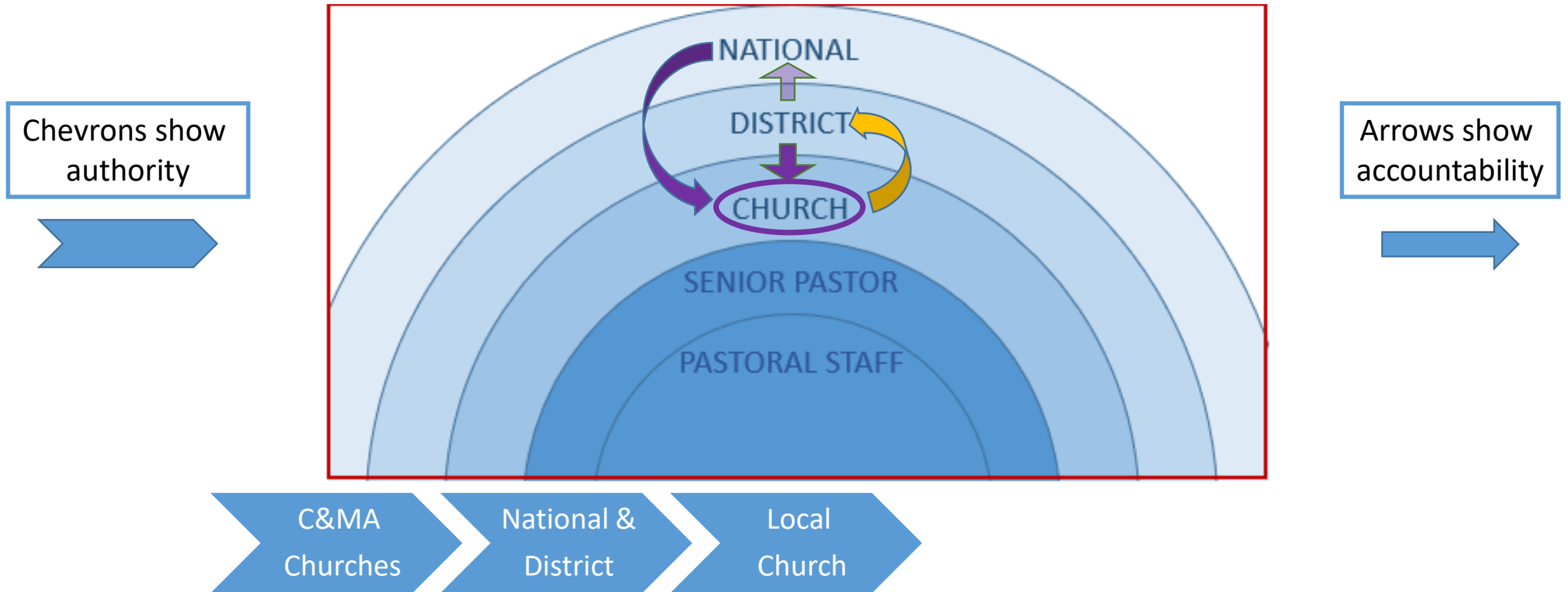
C&MA churches have collectively determined that each church shall be accountable

Where the Local C&MA Church fits



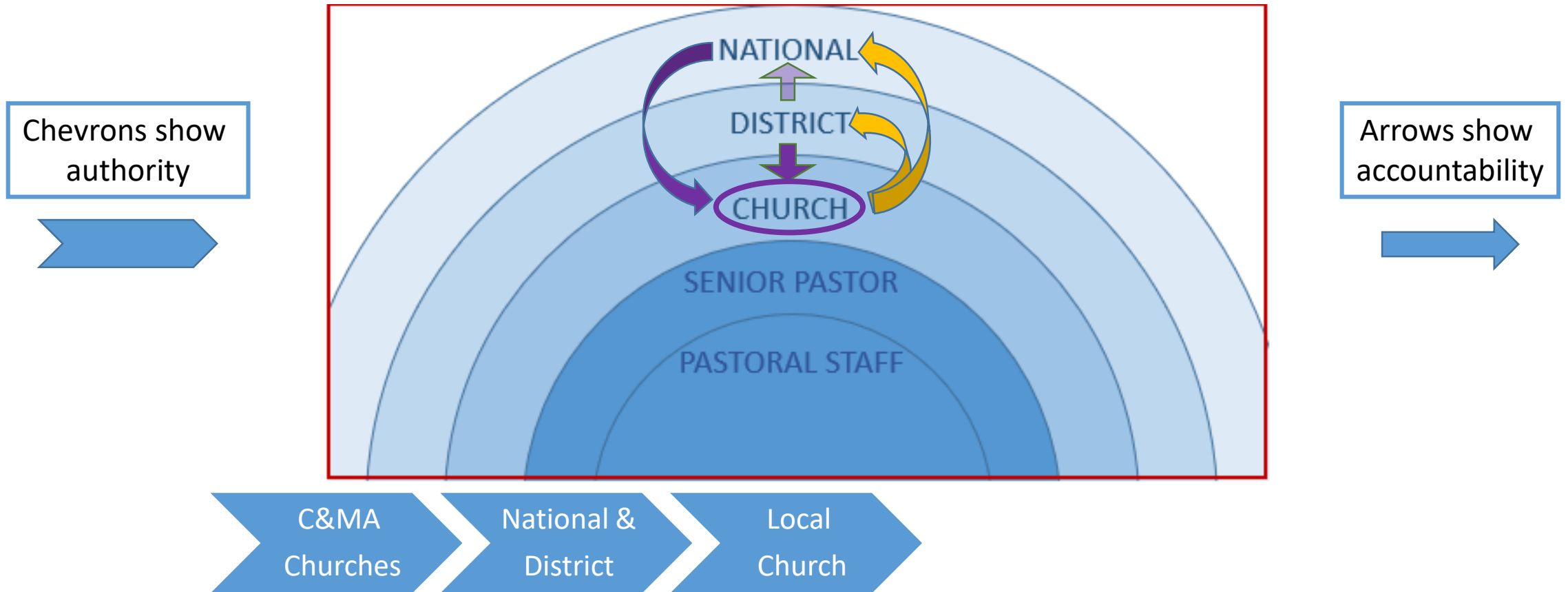
C&MA churches have collectively determined that each church shall be accountable to the District organization for immediate oversight and development

Where the Local C&MA Church fits



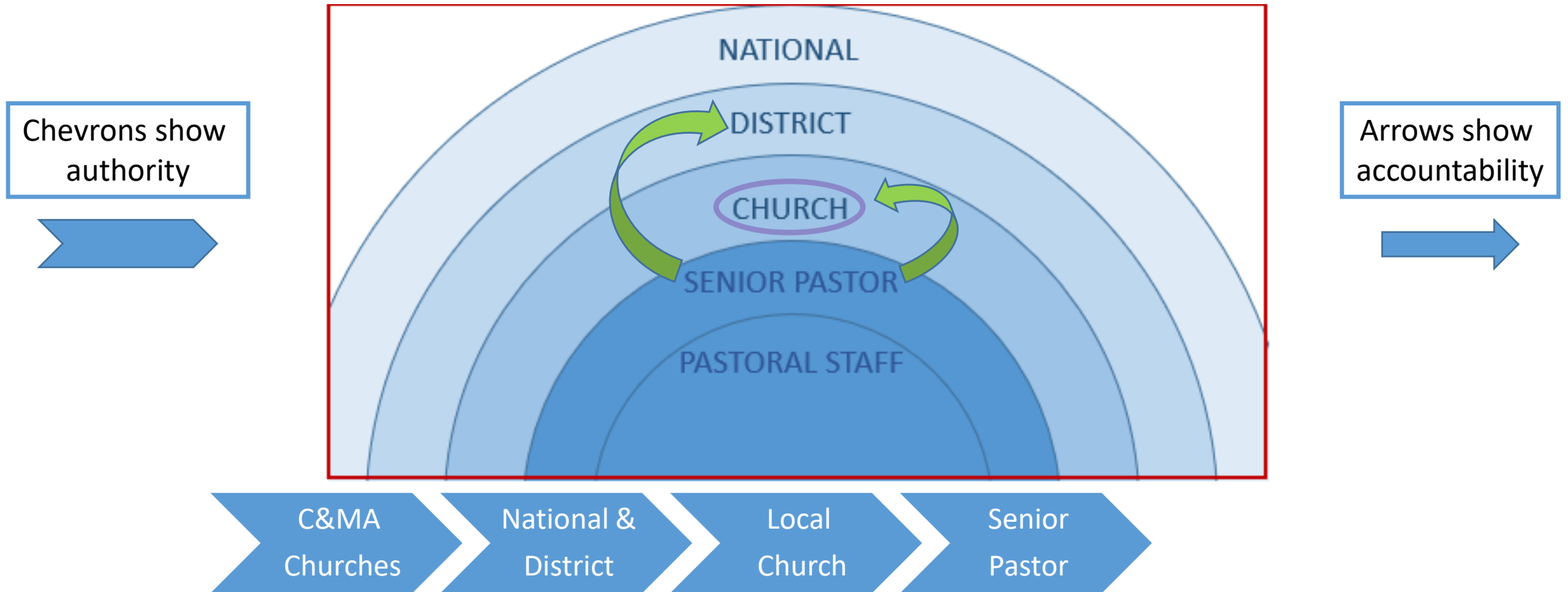
C&MA churches have collectively determined that each church shall be accountable to the District organization for immediate oversight and development and that all C&MA churches shall work together to resource (personnel and finances)

Where the Local C&MA Church fits



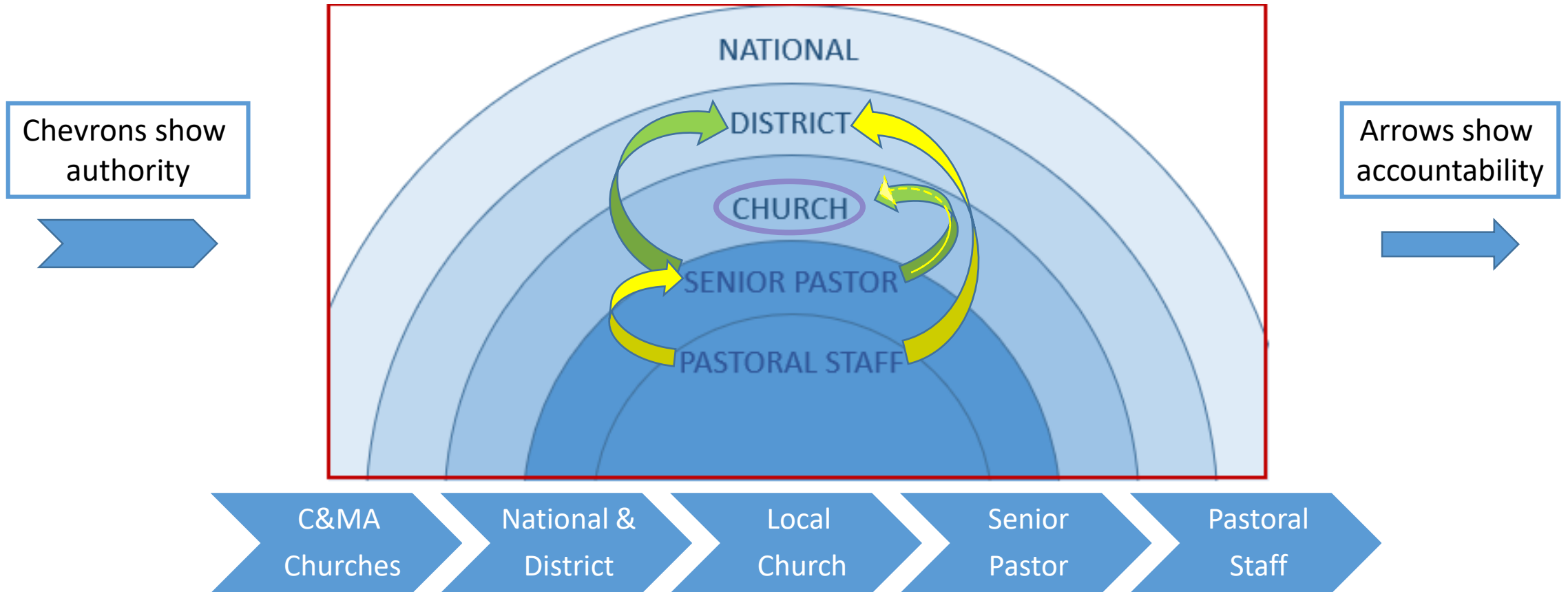
C&MA churches have collectively determined that each church shall be accountable to the District organization for immediate oversight and development and that all C&MA churches shall work together to resource (personnel and finances) the Global Advance of the gospel which is coordinated nationally by the Denomination.

Where the Local C&MA Church fits



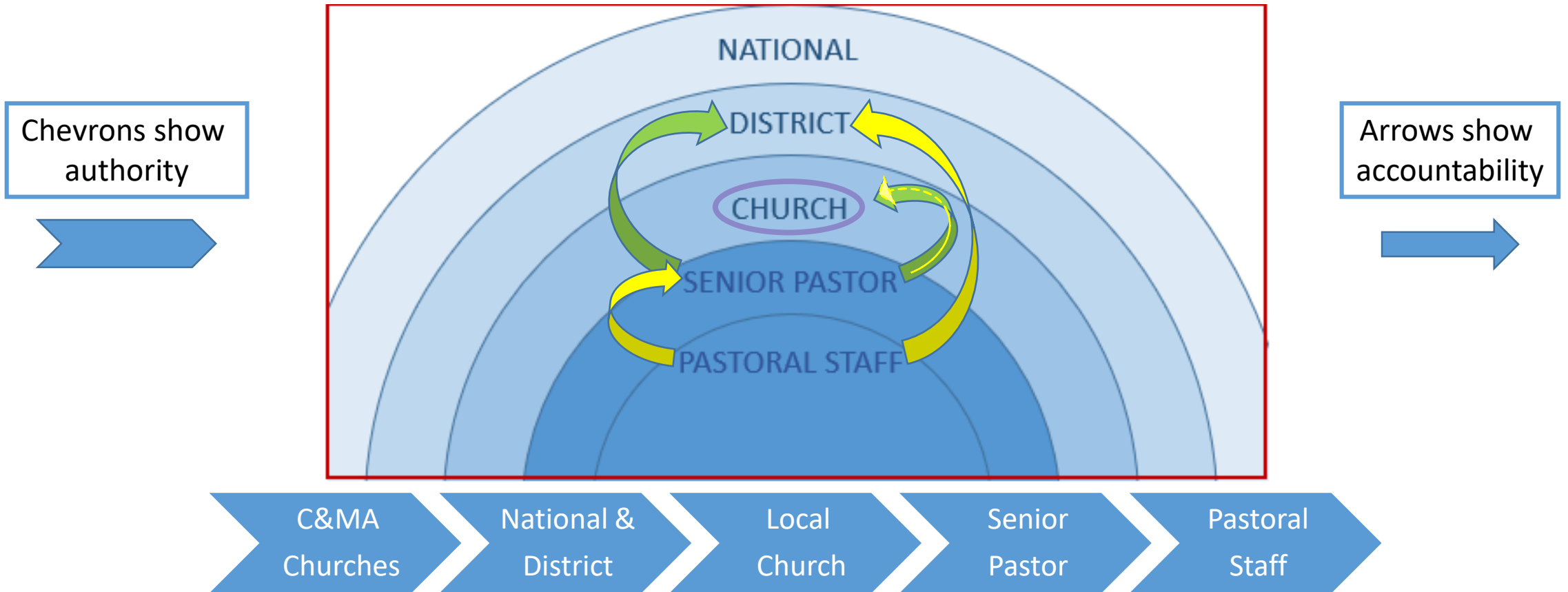
The Senior Pastor is approved by the Superintendent, called by the board, and appointed by the Superintendent.

Where the Local C&MA Church fits



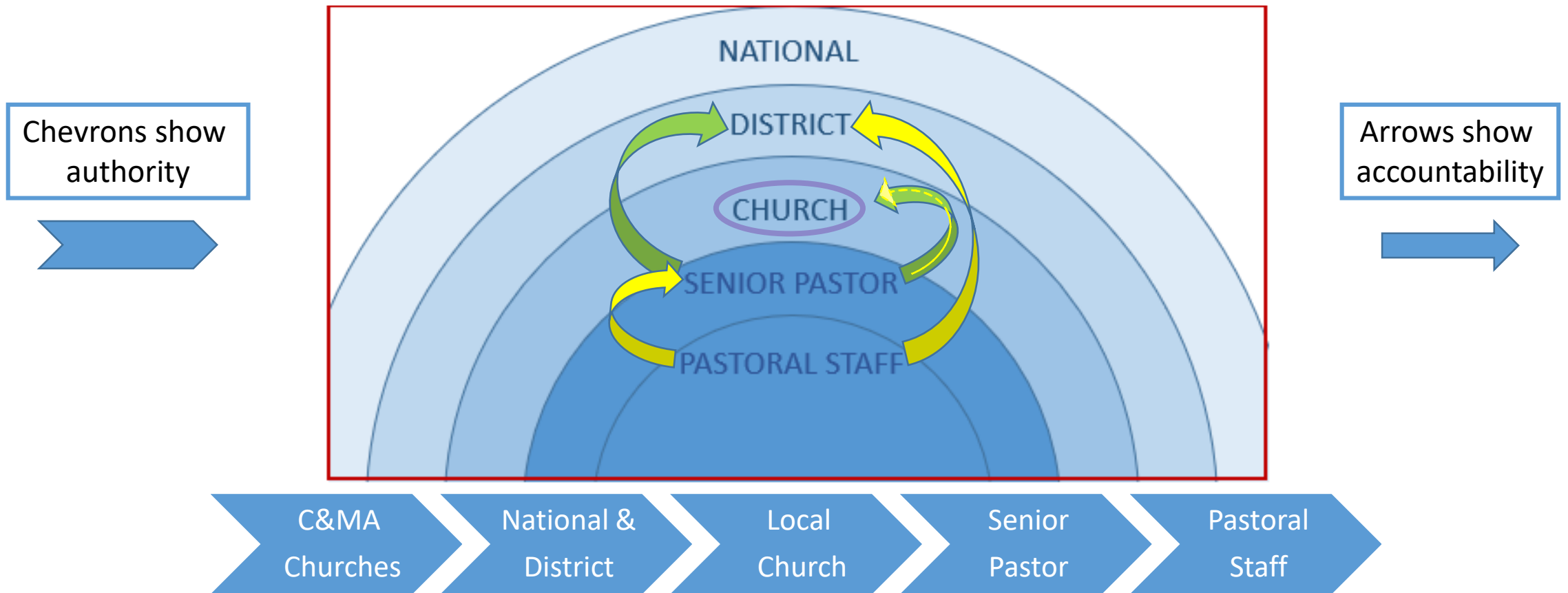
A Pastoral staff member is approved by the DS, nominated by the Senior Pastor, called by the board, and appointed by the DS.

Where the Local C&MA Church fits



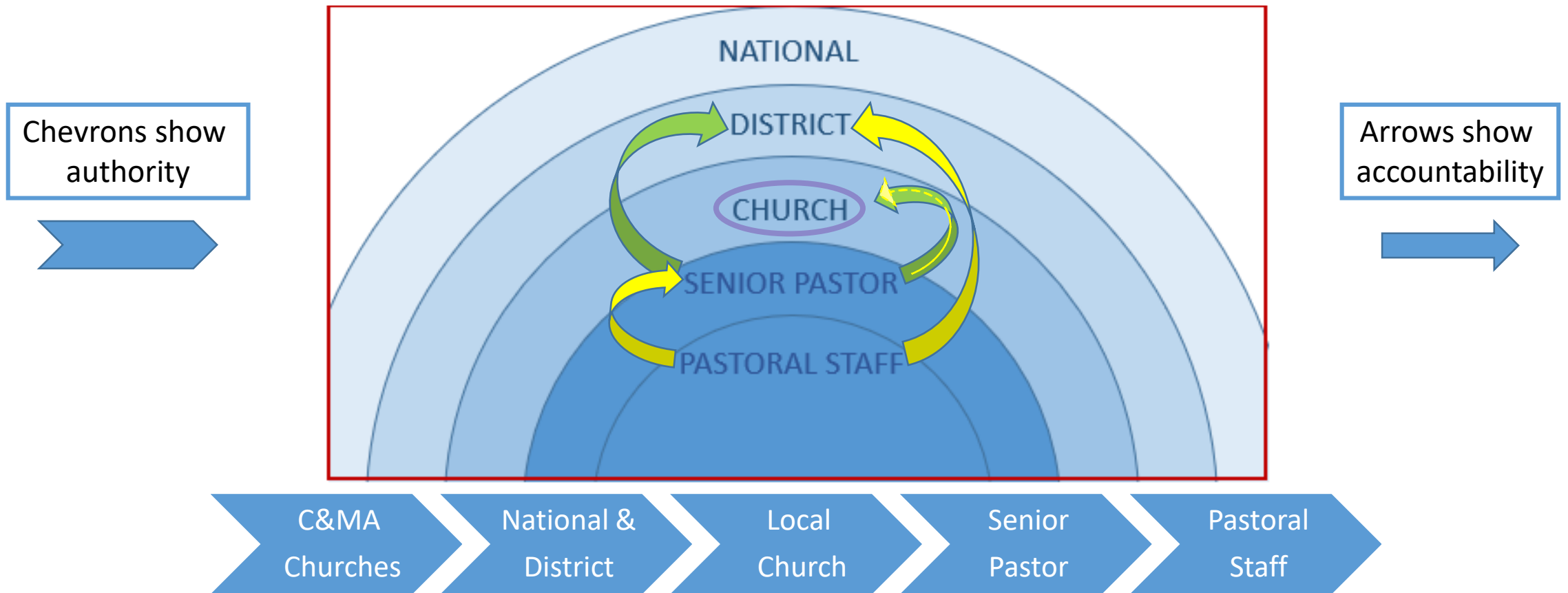
C&MA Churches have collective authority over the national and district organization

Where the Local C&MA Church fits



C&MA Churches have collective authority over the national and district organization and shared authority over the pastoral staff members they have chosen.

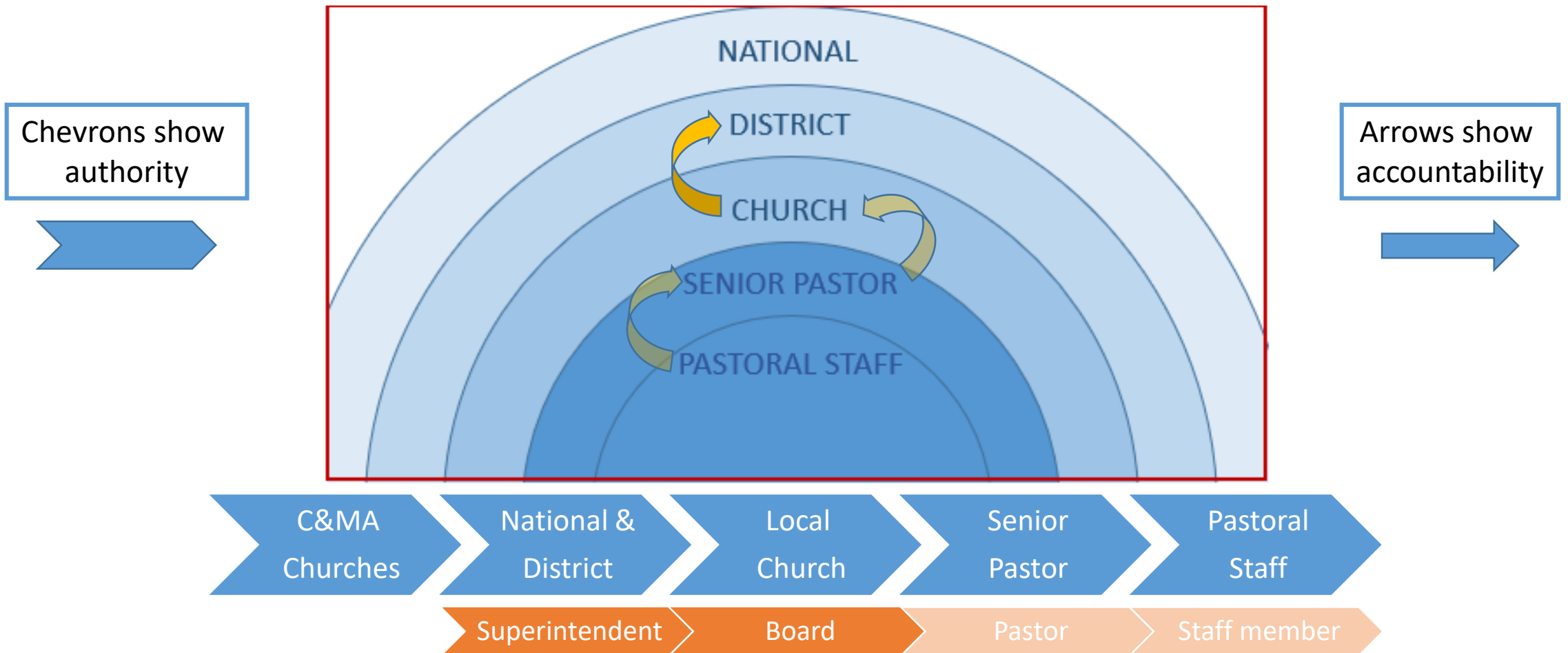
Where the Local C&MA Church fits



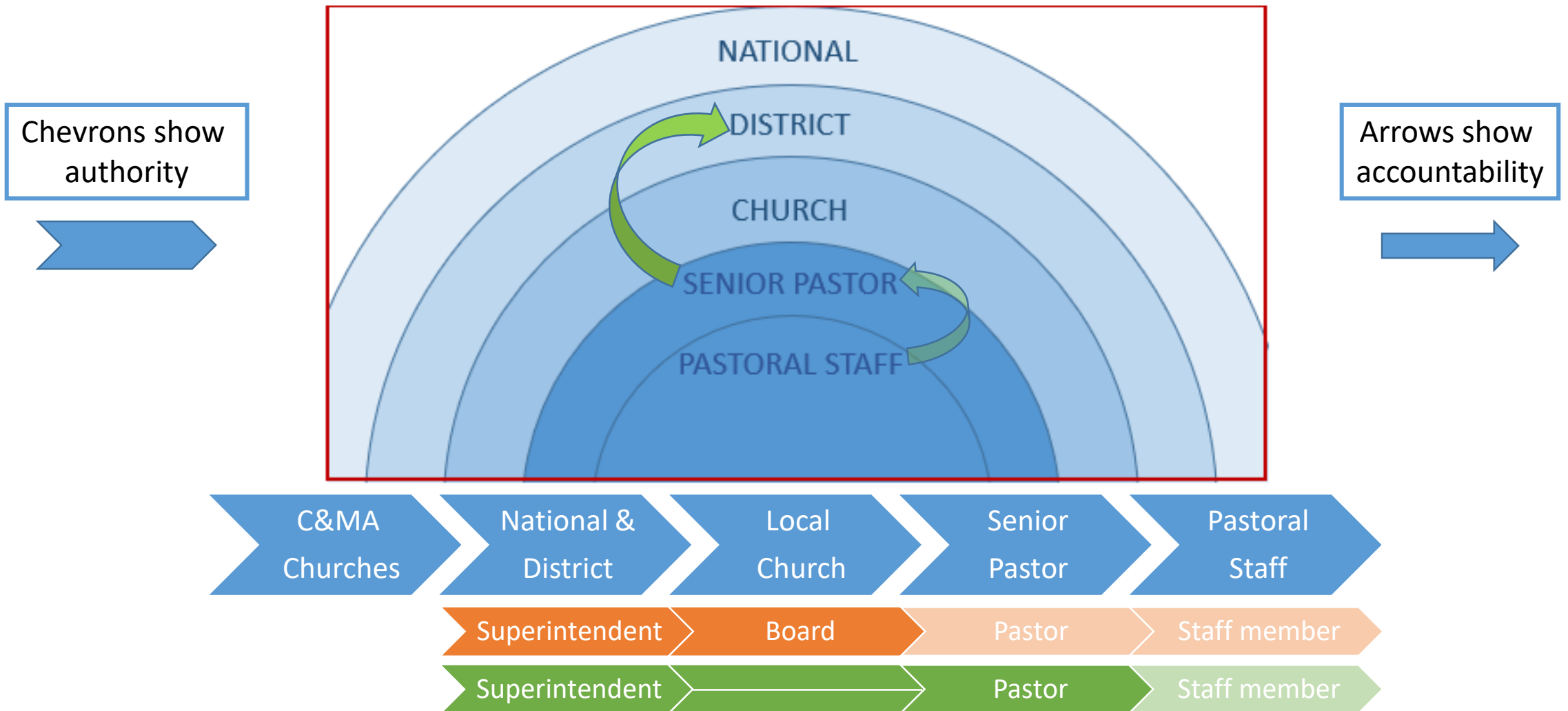
C&MA Churches have collective authority over the national and district organization and shared authority over the pastoral staff members they have chosen.

(The District *licenses* an individual for ministry; the Church *engages* [may *employ*] a licensed individual for ministry)

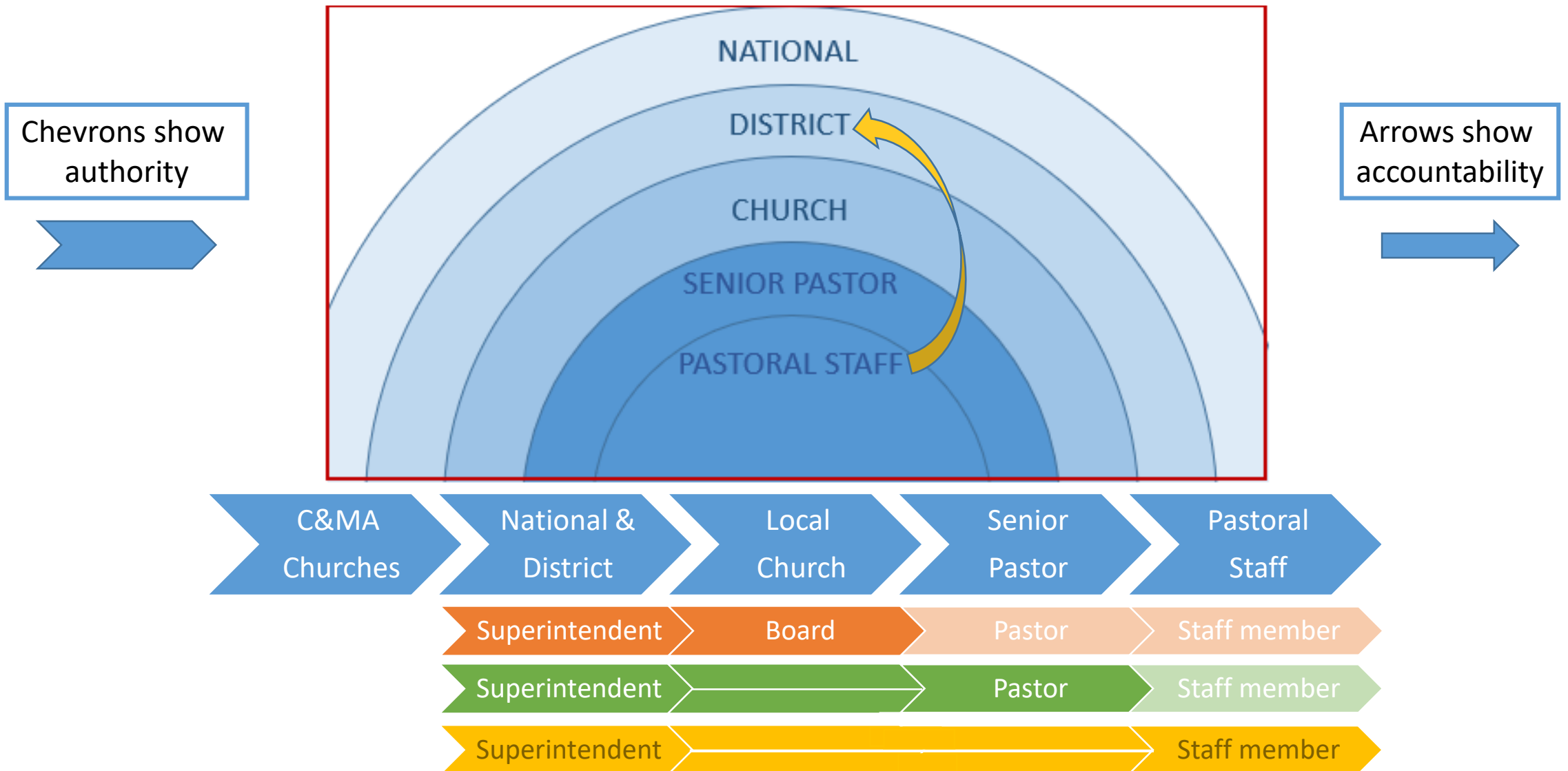
The place of the Superintendent

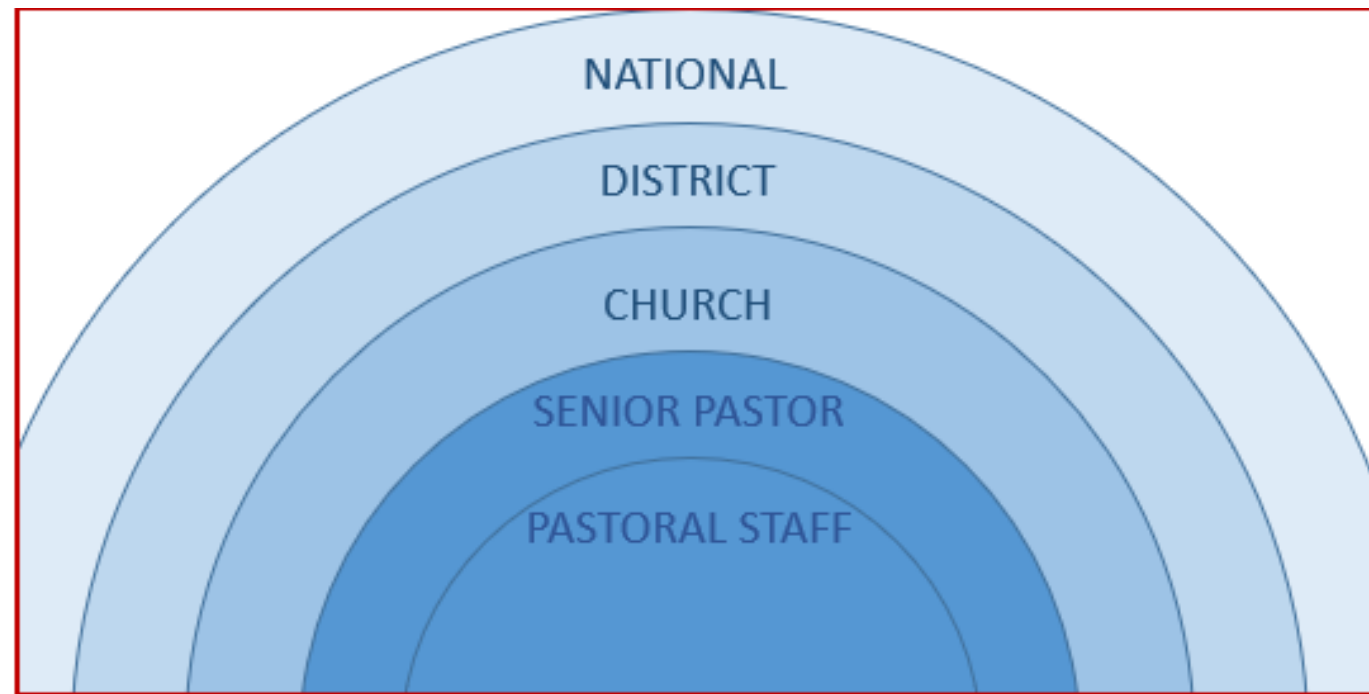


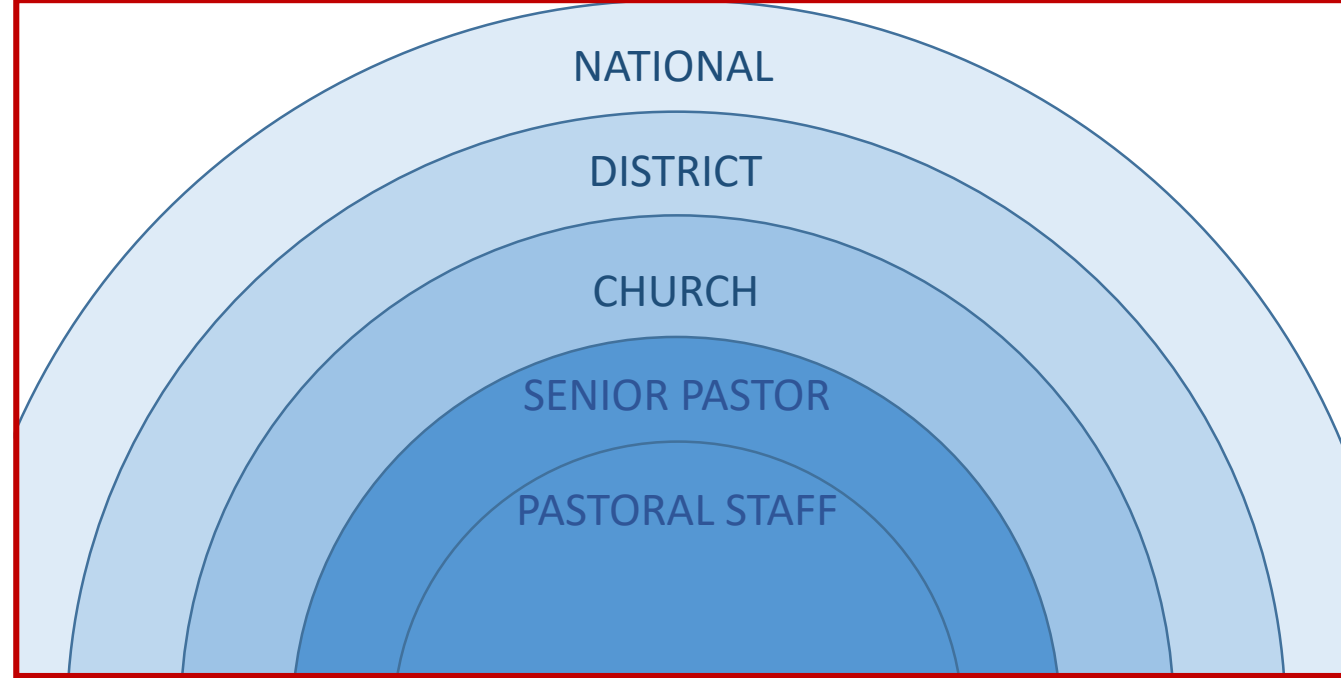
The place of the Superintendent

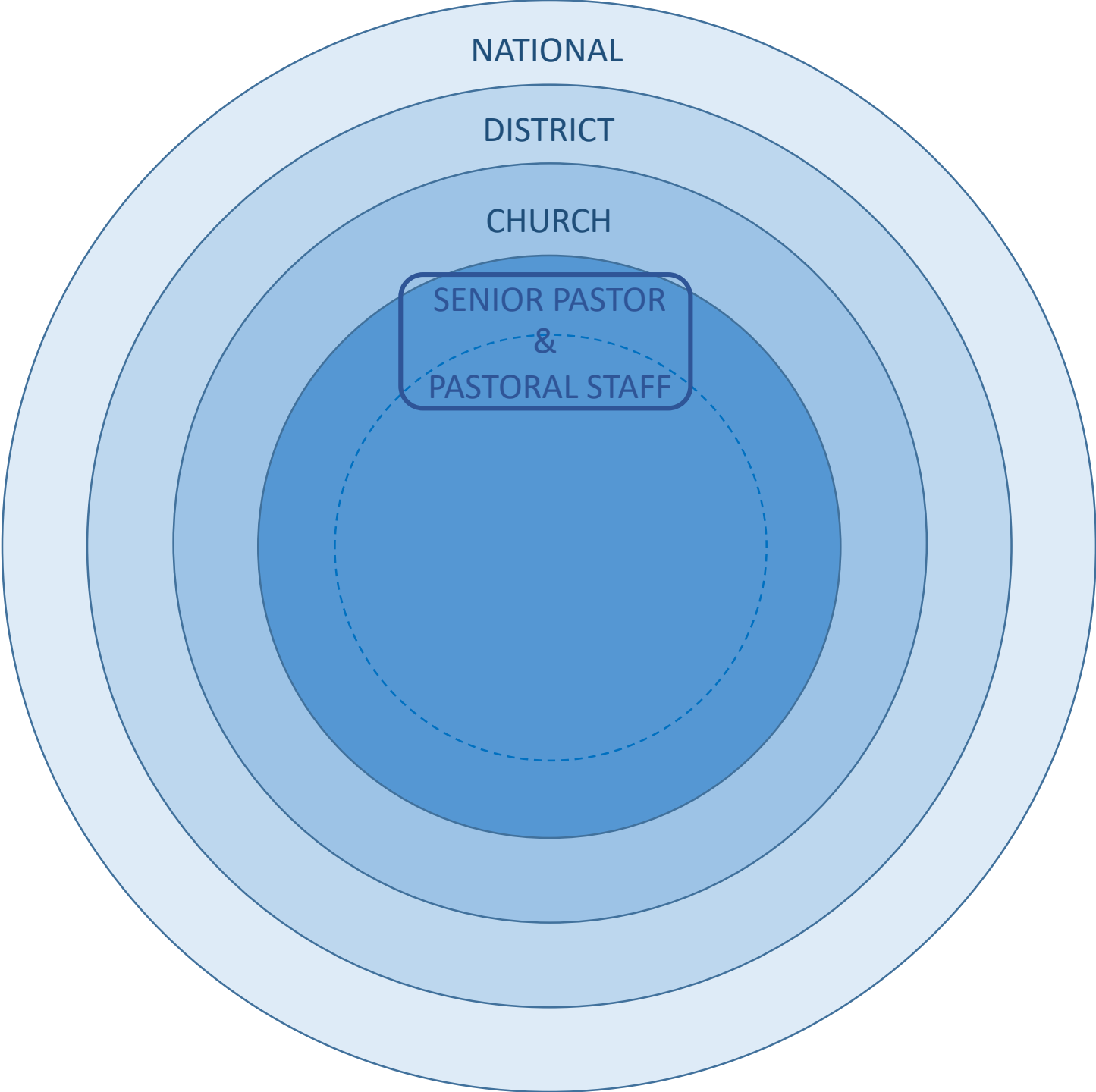


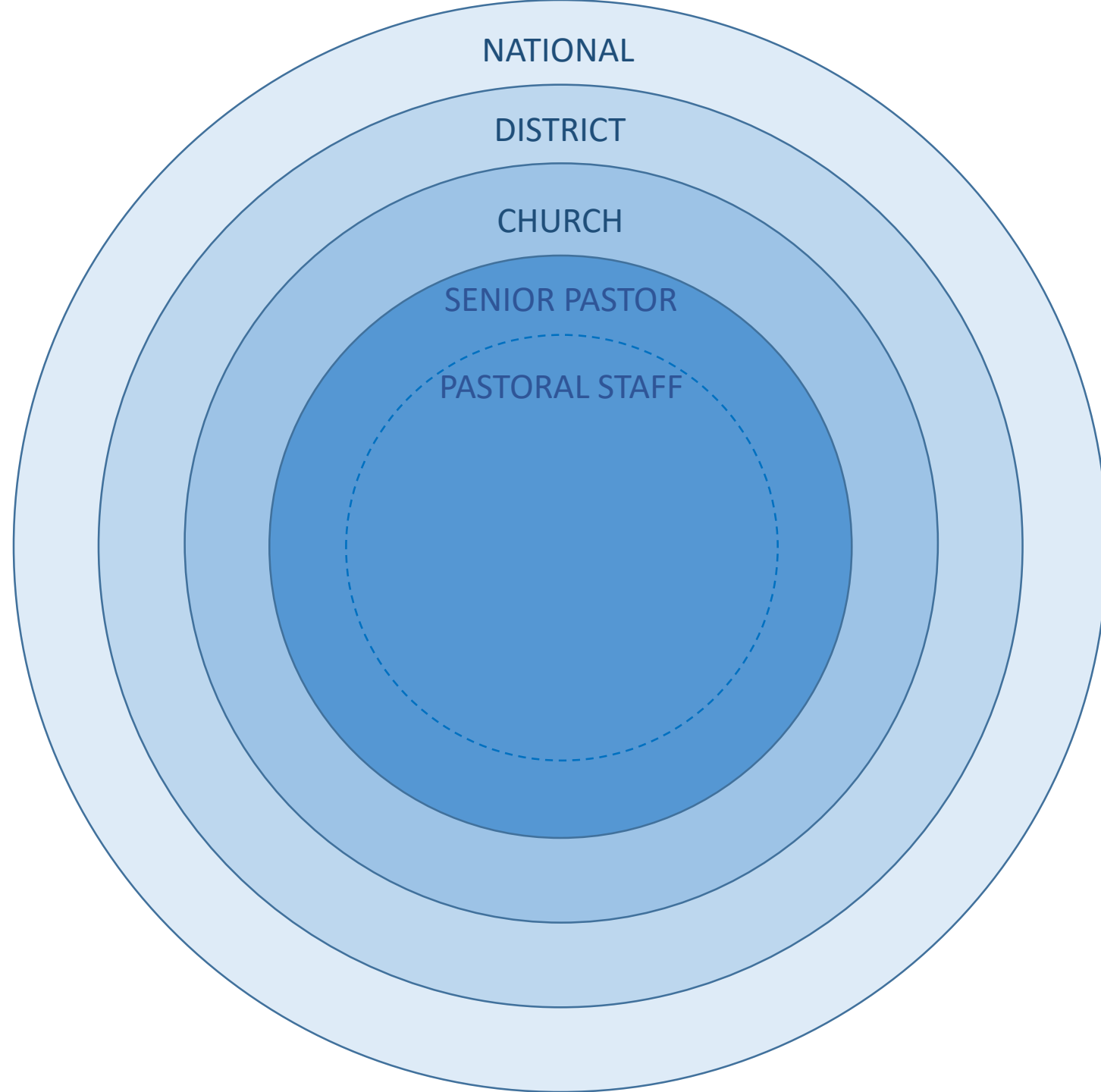
The place of the Superintendent

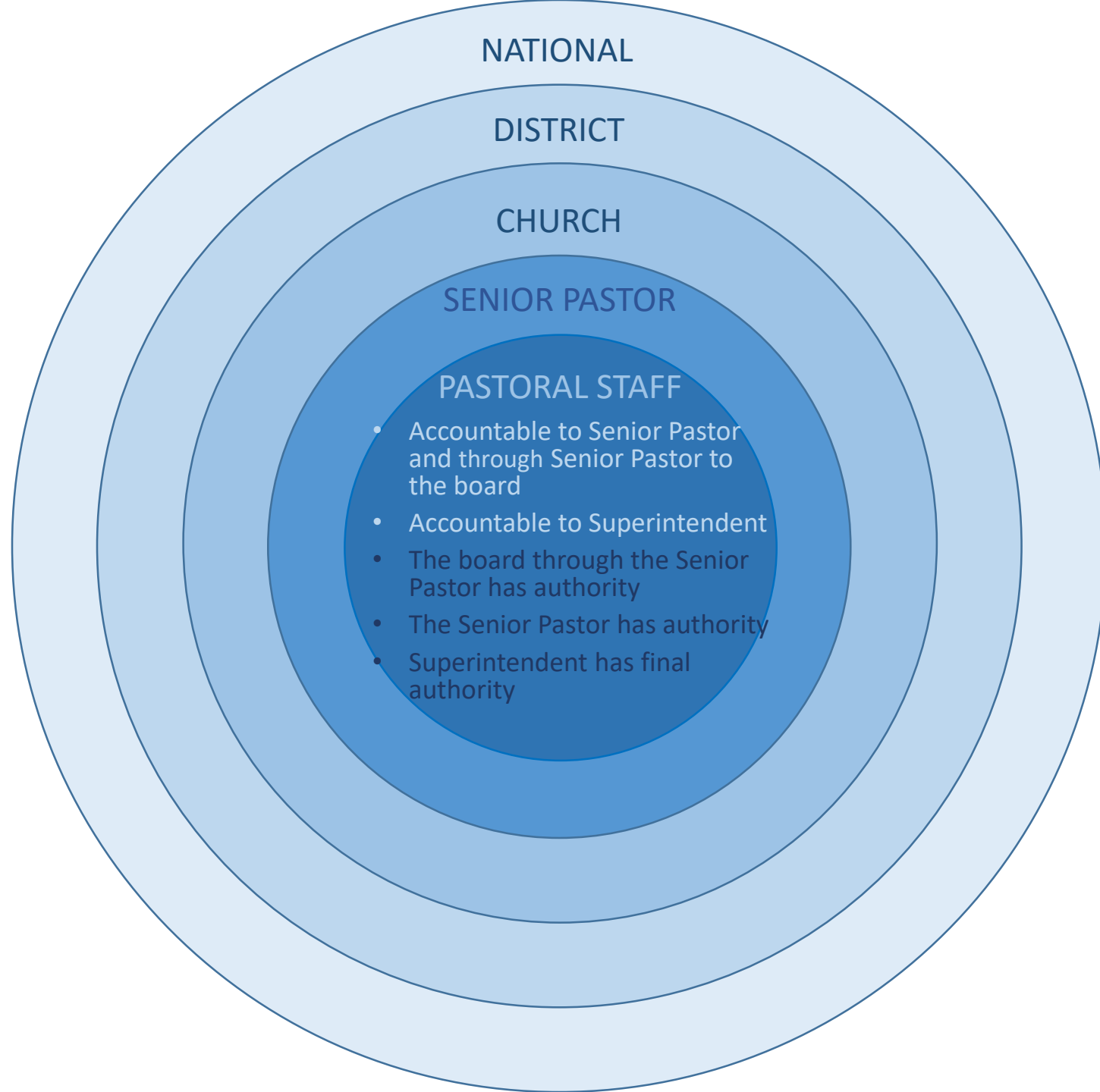


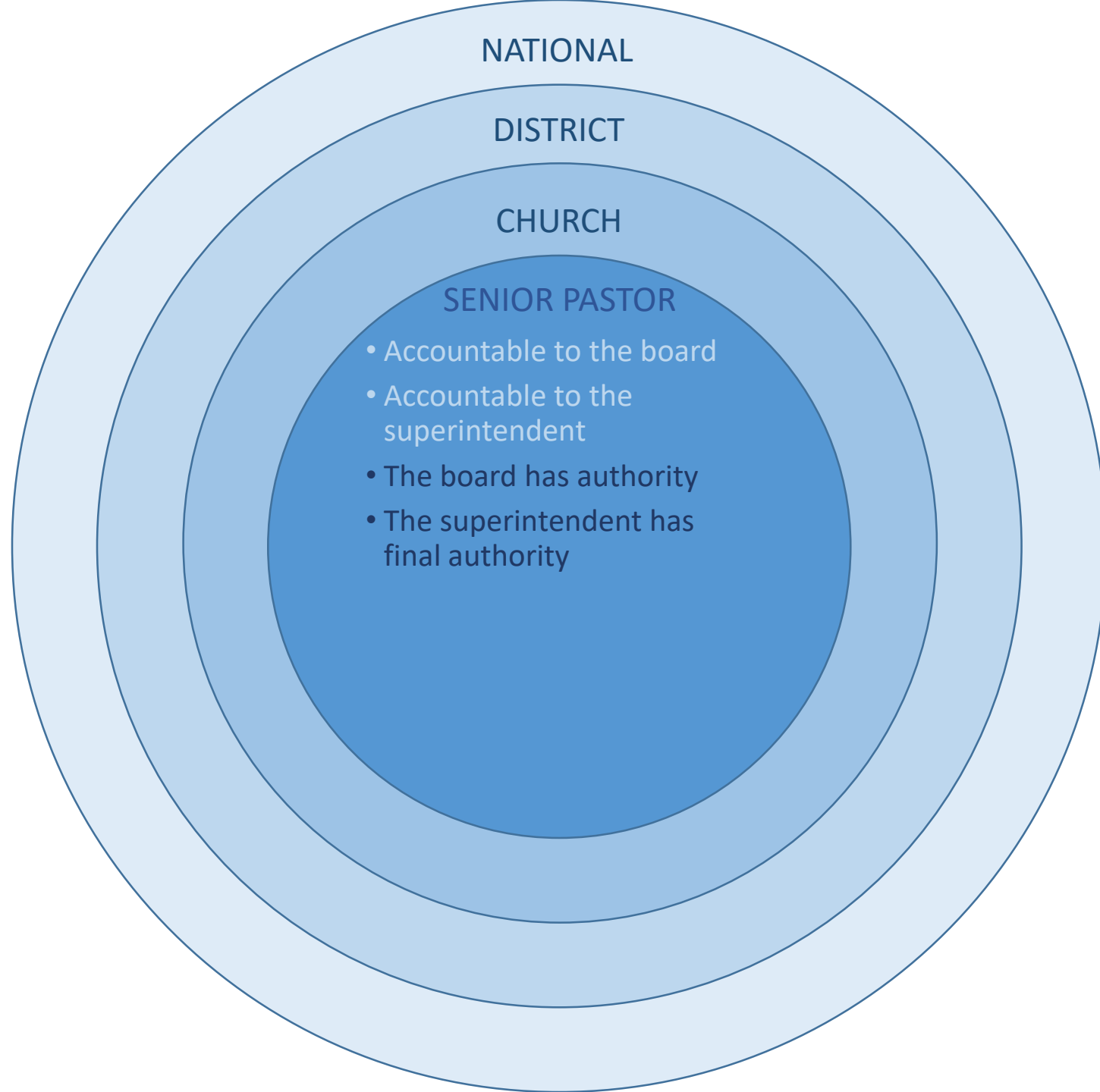














NATIONAL

DISTRICT

CHURCH

Church of the C&MA

- Accountable to other C&MA churches through the Superintendent
- Superintendent has authority

“When the Superintendent interacts with a church or an official worker, it’s as if all the churches in the district are present and speaking through the Superintendent to commission or commend, to caution or correct.”

NATIONAL

DISTRICT

The District of the C&MA

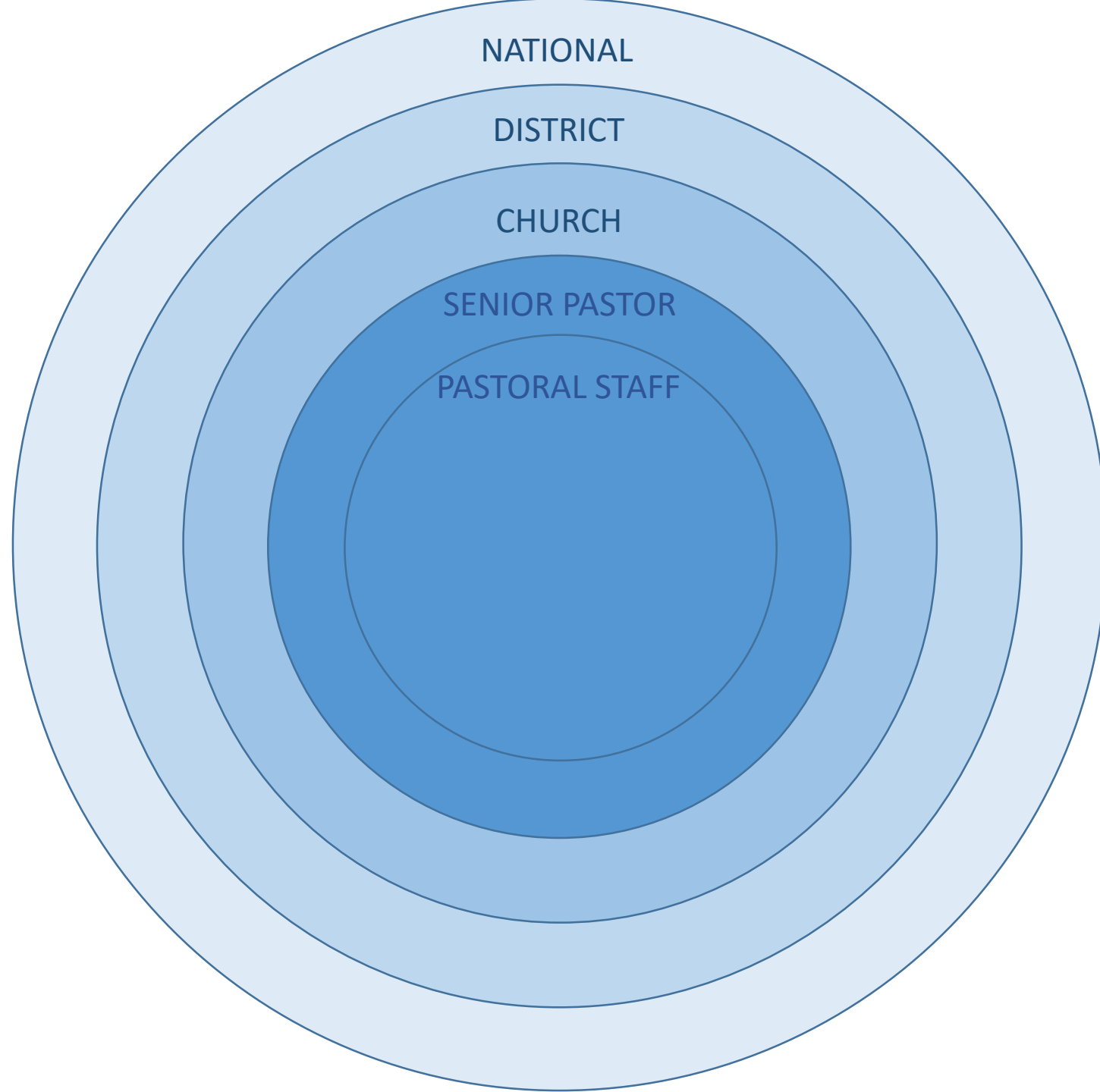
- The District is comprised of all C&MA churches and official workers in this region, and implements the collective will of those churches and workers, which is binding on all churches and official workers
- District Conference (*“the churches and official workers”*) elects and holds leadership accountable for the ministry of the churches and official workers in this region

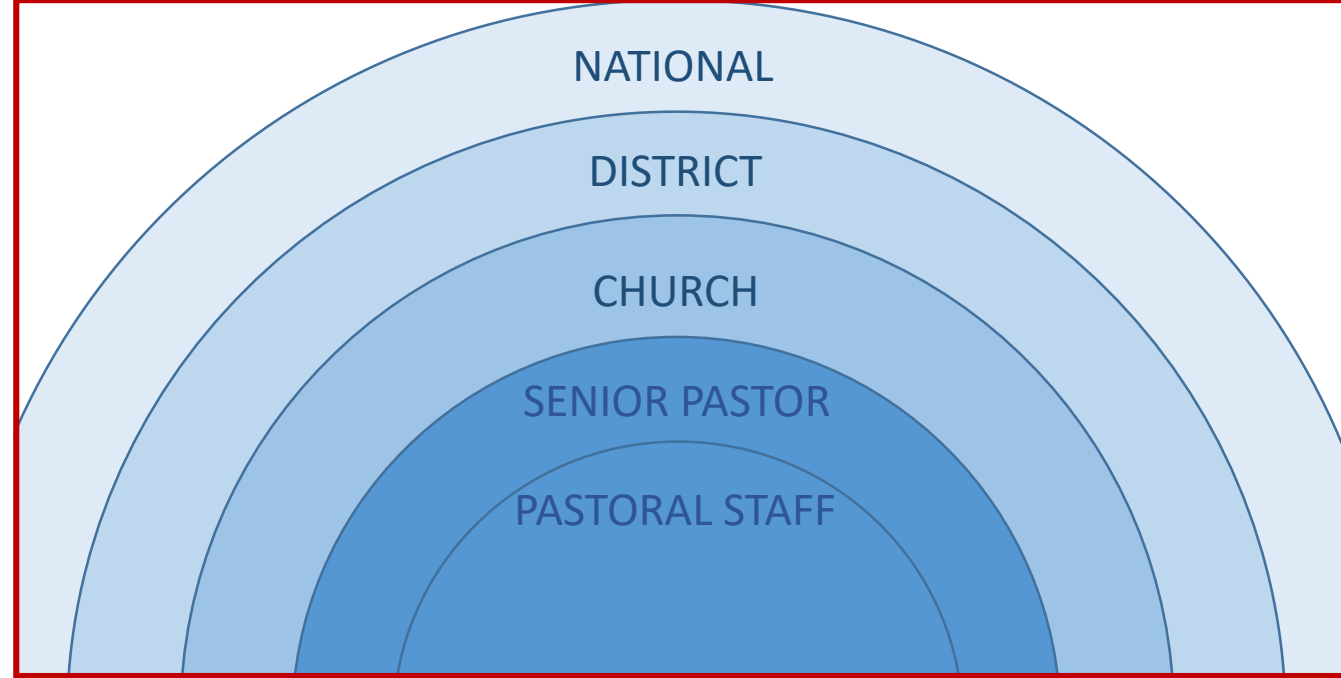
NATIONAL

The Christian and Missionary Alliance

- The denomination is “owned by” and an extension of all C&MA churches across Canada, and implements the collective will of those churches, which is binding on all churches and official workers
- General Assembly, thoroughly representative of the entire membership (“*the churches*”), is the ultimate authority under God of The Christian and Missionary Alliance. General Assembly elects and holds leadership accountable for the ministry of the churches and official workers across Canada and around the world

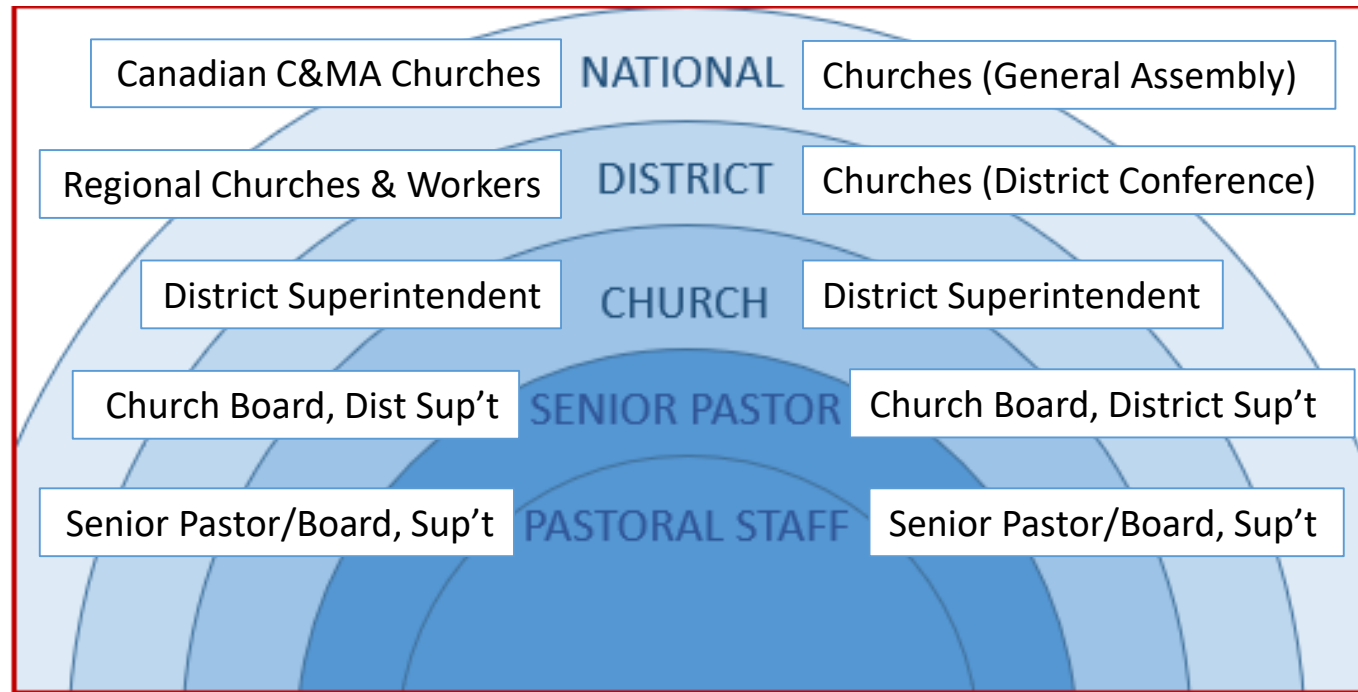
“The Christian & Missionary Alliance is Local Churches who believe they are better together and have therefore joined with each other to collectively oversee the establishment and continuance of vibrant churches and to maintain high standards of selection and service for their official workers (pastors and international workers).”

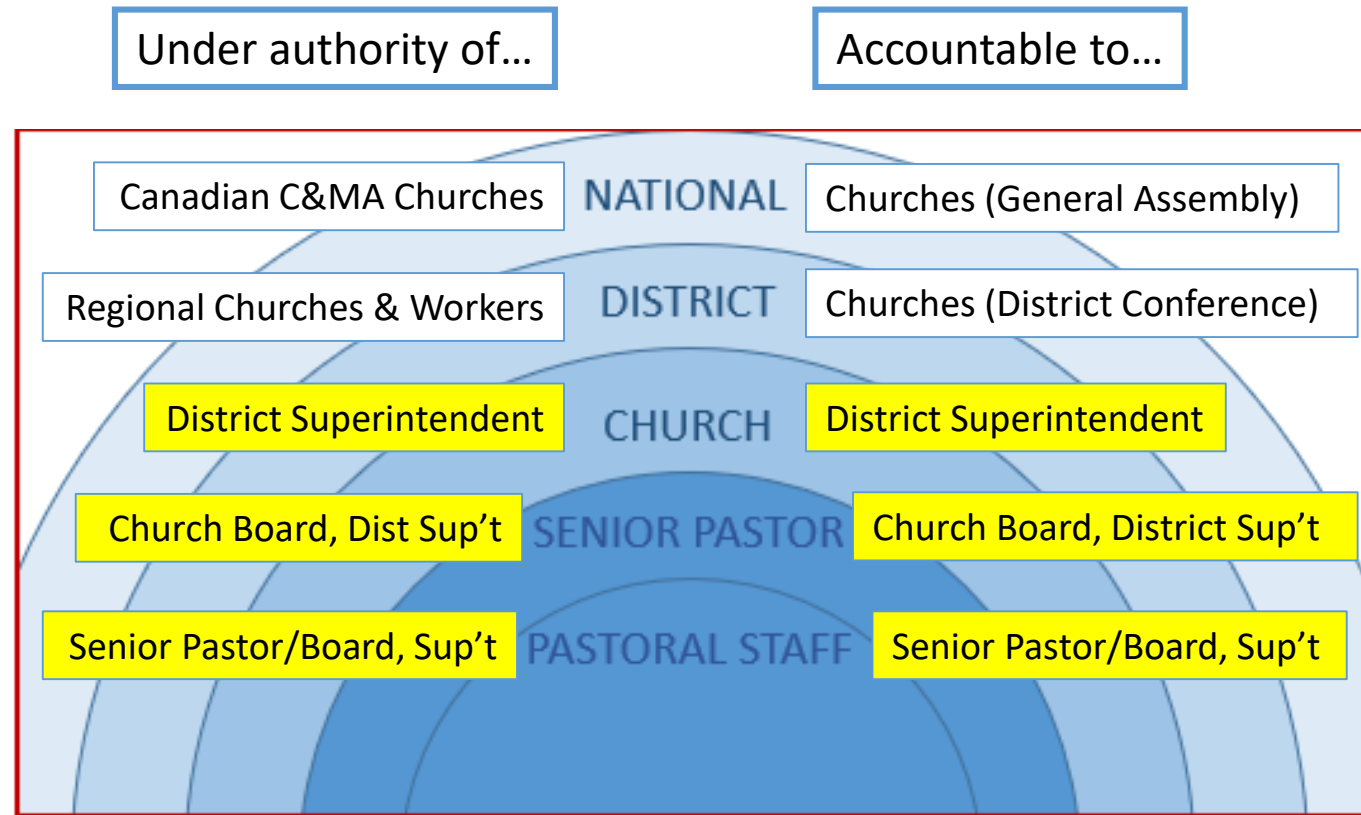




Under authority of...

Accountable to...





The District Superintendent is accountable to C&MA churches collectively to oversee the work of each C&MA church in the district and the licensed workers who serve those churches and has been granted the authority to do so

Lines of authority and accountability in The Christian and Missionary Alliance

Based on the Local Church Constitution and other policies in
The Manual
of The Christian and Missionary Alliance in Canada

